

SH-2+

Network and Web Enable Environmental Monitor Monitor and Manage in Real-Time



- **E-mail notification**
- **Full SNMP capabilities**
- **4 user defined thresholds**
- **Full Password Protection**
- **Graphing**
- **Data Encryption**
- **2 External Sensor Ports**
- **Temperature and Humidity Sensor Included**

External Sensor Port:

The SH-2+'s external sensor port allows you to add any one of the following optional sensors:

- Additional temperature sensor with up to 60 ft of cable
- Humidity sensor with up to 60 ft of cable
- Water sensor
- Voltage sensor
- Airflow detector
- Dry contact switch*

* The external sensor port supports most two-wire, on/off, or open/closed type sensors.

Features:

- Requires no software
- Four user defined threshold settings
- On board graphing capability
- Sends e-mail notifications
- Sends SNMP traps to 4 destinations
- Supports SNMP polling
- Supports DHCP
- Full Password Protection
- Internal web server
- 0 U rack mountable
- Fully compliant with all operating systems
- Includes easy to read documentation and helpful utilities
- Free trial version of OverTime
- MIB integrates with all popular NMS
- 1 year limited warranty
- Free technical support via e-mail

Specifications:

Ports: RJ-45

Power: 9.0V DC 500ma

LED Indicators: Power, Network Connection, Activity,

2 Port Status Indicators

Certification: FCC B, CE Mark

Cabling Category: 5 UTP or STP

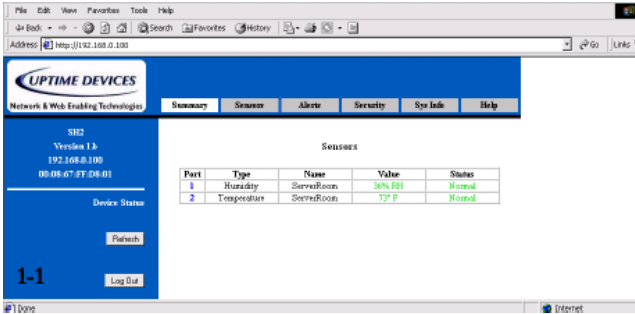
Dimensions: 4" x 2.5" x 1.5"

Weight: 7 oz.

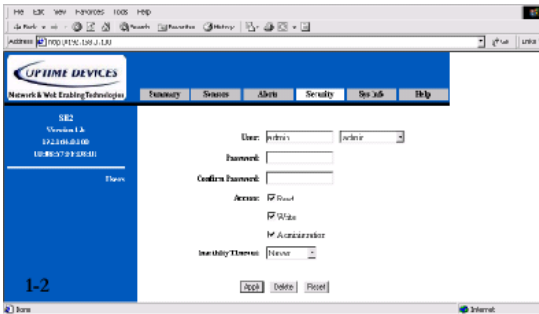
Mounting: 0 U or desktop

SH-2+

Network and Web Enable Environmental Monitor Monitor and Manage in Real-Time

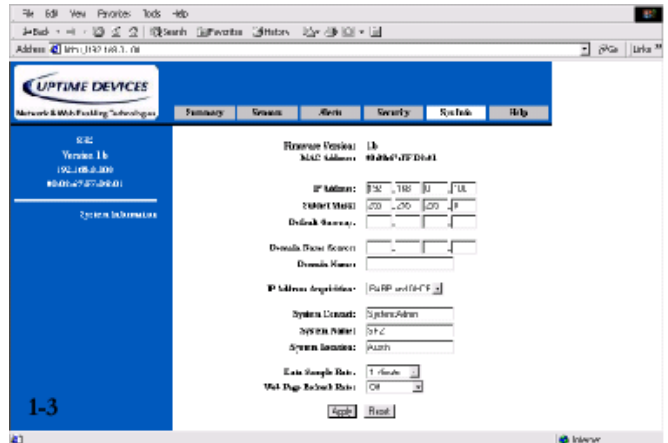


1.1 SH-2+ Summary View shows the data provided by the sensors plugged into your device.



1.2 SH-2+ Security Screen gives you the ability to change your administrative information for your SH-2+.

1.3 SH-2+ System Info Screen allows you to configure your SH-2+'s network settings.



1.4 SH-2+ Sensor View gives you a detailed description of the sensors in you device and allows you to change the settings for them.

