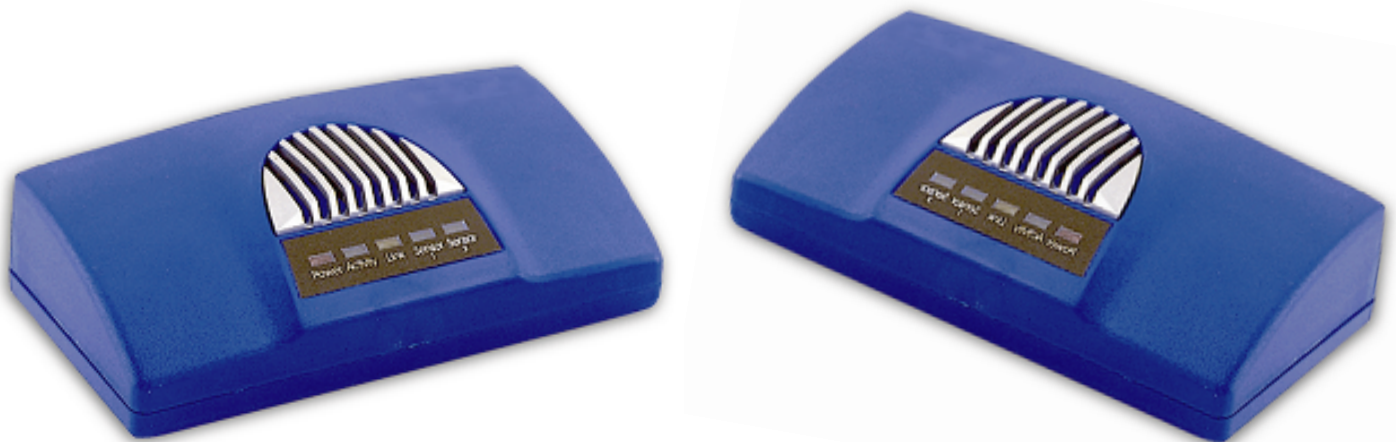


SH-2

Network and Web Enabled Temperature Sensor

**Monitor and Manage in Real-Time
No Software Required**



- E-mail notification
- Full SNMP capabilities
- 4 user defined thresholds
- 2 levels of password protection
- Graphing
- Additional external sensor port

3160 Bee Caves Rd. Suite 200
Austin, TX 78746
1.866.665.6582
Phone: 512.328.1800
Fax: 512.328.1844
www.uptimedevices.com



SH-2

Network and Web Enabled Temperature Sensor

The SH-2 is the most cost effective way to monitor critical temperatures via your network. With its internal web server, the SH-2 requires no software and is platform independent. It can e-mail you if the temperature goes out of your specified range. The SH-2 can be viewed from anywhere over the web with its user friendly interface. The SH-2 integrates and sends SNMP Traps to all popular Network Management Software. The additional external sensor port gives you the capability to a wide variety of optional sensors. Optional software available for the SH-2 includes MAPnLINK and OverTime. Uptime's MAPnLINK package allows you to view the status of all of your SH-2's on one screen. The MAPnLINK makes it easy to instantly drill down to a specific device. It makes changing SH-2 settings for all of your devices or a range of your devices a simple operation. OverTime allows you to do extensive data logging, graphing, and analysis of the temperature and external sensor values. It is the perfect solution for trending and quality control applications. The SH-2 installs in a flash. Just plug in your cables, put it online, and you are in business. There is no easier way to monitor critical temperatures in real time over your network.

Features:

- Requires no software
- Four user defined threshold settings
- On board graphing capability
- Sends e-mail notifications
- Additional external sensor port with auto-sense
- Sends SNMP traps to 2 destinations
- Supports SNMP polling
- Supports DHCP
- 2 levels of password protection
- Internal web server
- 0 U rack mountable
- Fully compliant with all operating systems
- Includes easy to read documentation and helpful utilities

External Sensor Port:

The SH-2's external sensor port allows you to add any one of the following optional sensors:

- Additional **temperature** sensor with up to 60 ft of cable
- **Humidity** sensor with up to 60 ft of cable
- **Water** detector
- **Voltage** detector
- **Airflow** sensor
- **Dry contact** switch*

* The external sensor port supports most two-wire, on/off, or open/closed type sensors.

Specifications:

Ports RJ-45
Power 9.0V DC 500ma
LED Indicators Power, Network Connection, and Link Activity
2 Port Status Indicators
Certification FCC B, CE Mark
Cabling Category 5 UTP or STP
Dimensions 4" x 2.5" x 1.5"
Weight 7 oz.

Product Includes:

- SH-2
- Temperature Sensor
- AC Power Adapter
- Full SNMP MIB
- Quick Start Guide
- Documentation & Utilities CD

3160 Bee Caves Rd. Suite 200
Austin, TX 78746
1.866.665.6582
Phone: 512.328.1800
Fax: 512.328.1844
www.uptimedevices.com

